

Sam Magill, United States

**The Art of Coaching Supervision –
Generating the Environment in
which the artist can flourish.**





Samuel_P_Magill_Sr

Answer:

They prevent “house palate”.



Samuel P. Magill Sr.



Samuel P. Magill Sr.

Lesson?

Our coaching is doomed if we lose perspective on our own wonderful creations.

Chateau la Baignoire





SamuelPMagillSr





SamuelPMagill61

Key Points

- Coaching is an art and the coach an artist.
- Artists face the unknown and unknowable.
- Coaching supervision helps the artist face them.

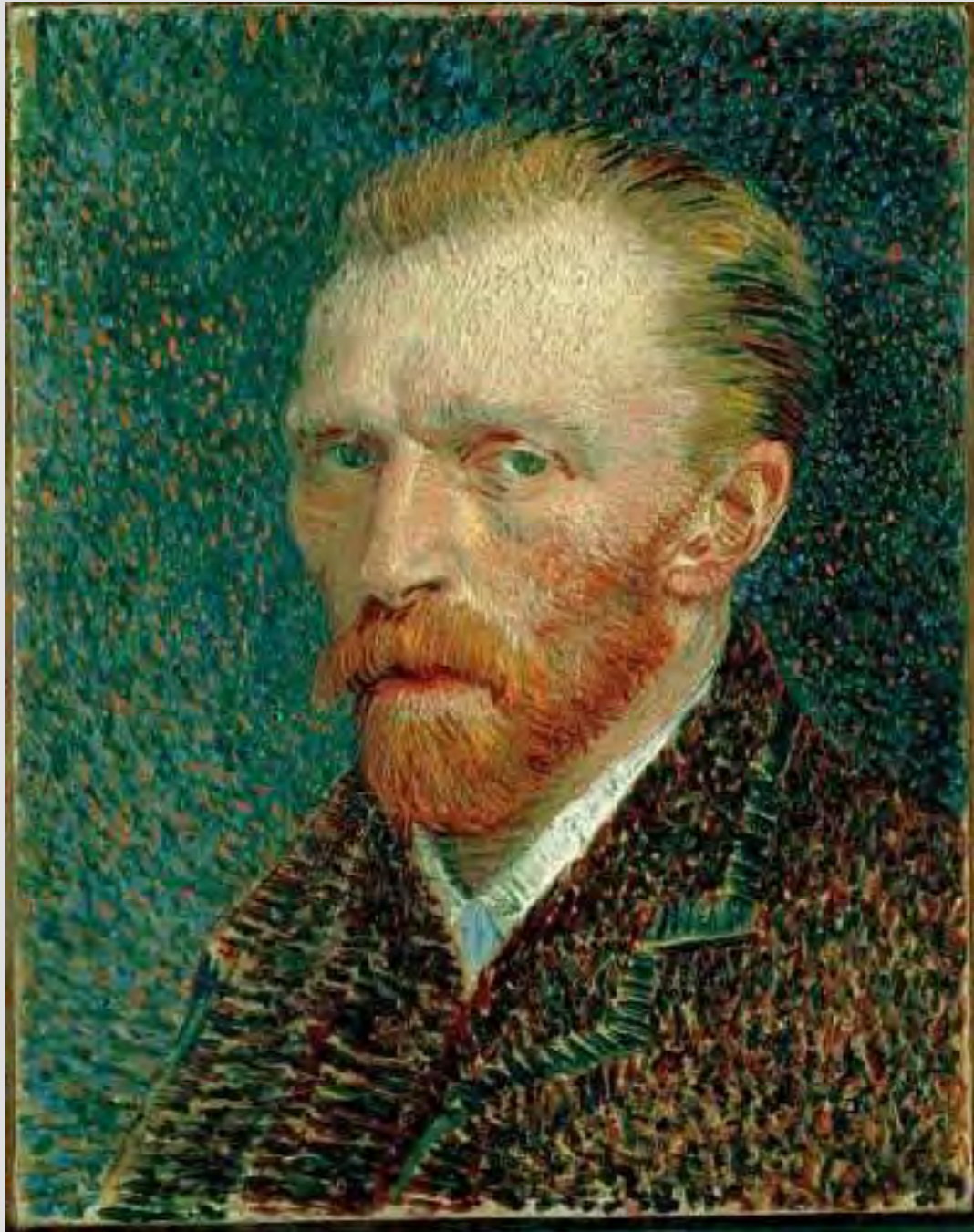






Photo by J. Malcolm Cooney/NPS





Picasso on God

“God is really only another artist. He invented the giraffe, the elephant and the zebra. He has no real style. He just goes on trying other things.” *Pablo Picasso*

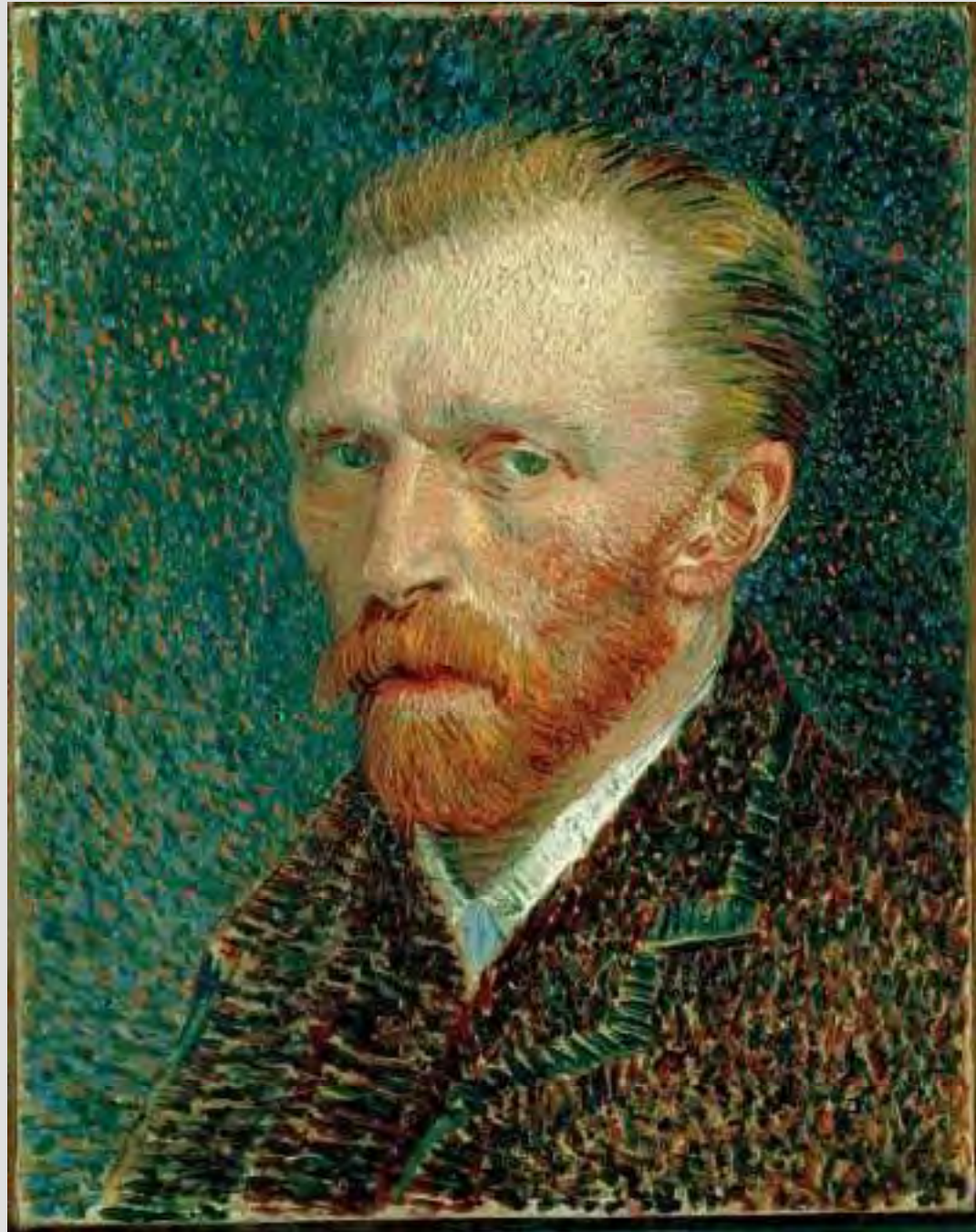
Human Drama

That which interests us is the inquietude (concern) of Cezanne. It is learning from Cezanne, the torments of Van Gogh – that is to say, the human drama. The rest is false. *Exposition of Cezanne and Picasso, Aix-en-Provence, France. 2009.*

Paired discussion

What are some of the dramas you and/or your clients have experienced?

How do these dramas affect you as a coach?



Coach → Artist → Unknown Creativity?

- Coaching is an art.
- Artists enter unknown.
- When you go there, you experience vulnerability.
- The result can be creativity.

Pair Discussion

- Times when you have experienced the unknown?
- Moments when you have felt vulnerable and yet creative?



Samuel P. Magill SJ



Fundamental Environments

- Phenomenal
- Numenal
- Liminal

The Coach's Inner Environment

‘Coaches must tune in to how the client’s force field impacts on them, so they can maintain their equilibrium within it and help the leader do the same.’ *Mary Beth O’Neill (2000)*

The Coach's Inner Environment

'The success of an intervention depends on the inner condition of the intervener.'
Otto Sharmar/Peter Senge

Girl Before a Mirror



Learning to see into our own mirror: A guided imagery

On your table, there is a small mirror. I invite you to take a moment and gaze into your reflection. Pass it around in silence.

Now reflect on the coach you are as we take a walk around your inner environment.

Girl Before a Mirror



Personal notes.....and sharing

- Take a moment to notice what you have noticed.
- Write.
- Share what you want to with one person.

Polishing the mirror

- Pass the mirror around again.. Put your mark on it.....
- In what ways has your own mirror become dulled, smudged?
- What might you have become blind to in your clients?
- If you took a cloth to it, and slowly polished it, what might you remember as the very best you?

Comments about Coaching Supervision

Coaching is a human interaction so it will always involve relationships, boundaries and some degree of entanglement. Consequently, coaching supervision is a smart investment. Mary Beth O'Neil (Executive Coaching With Backbone and Heart.)

Just for You.....

- What encouragement can you give to your artist self?
- What comes to mind now that you might, in a longer session, bring to a coaching supervision conversation?

The Artist's Challenge:

Knowing and not knowing,
Constantly plunging into the unknown.



Presenter contact information:

Sam Magill

sam@sammagill.com

01-425-787-0846 office

01-425-501-0399 mobile

www.sammagill.com